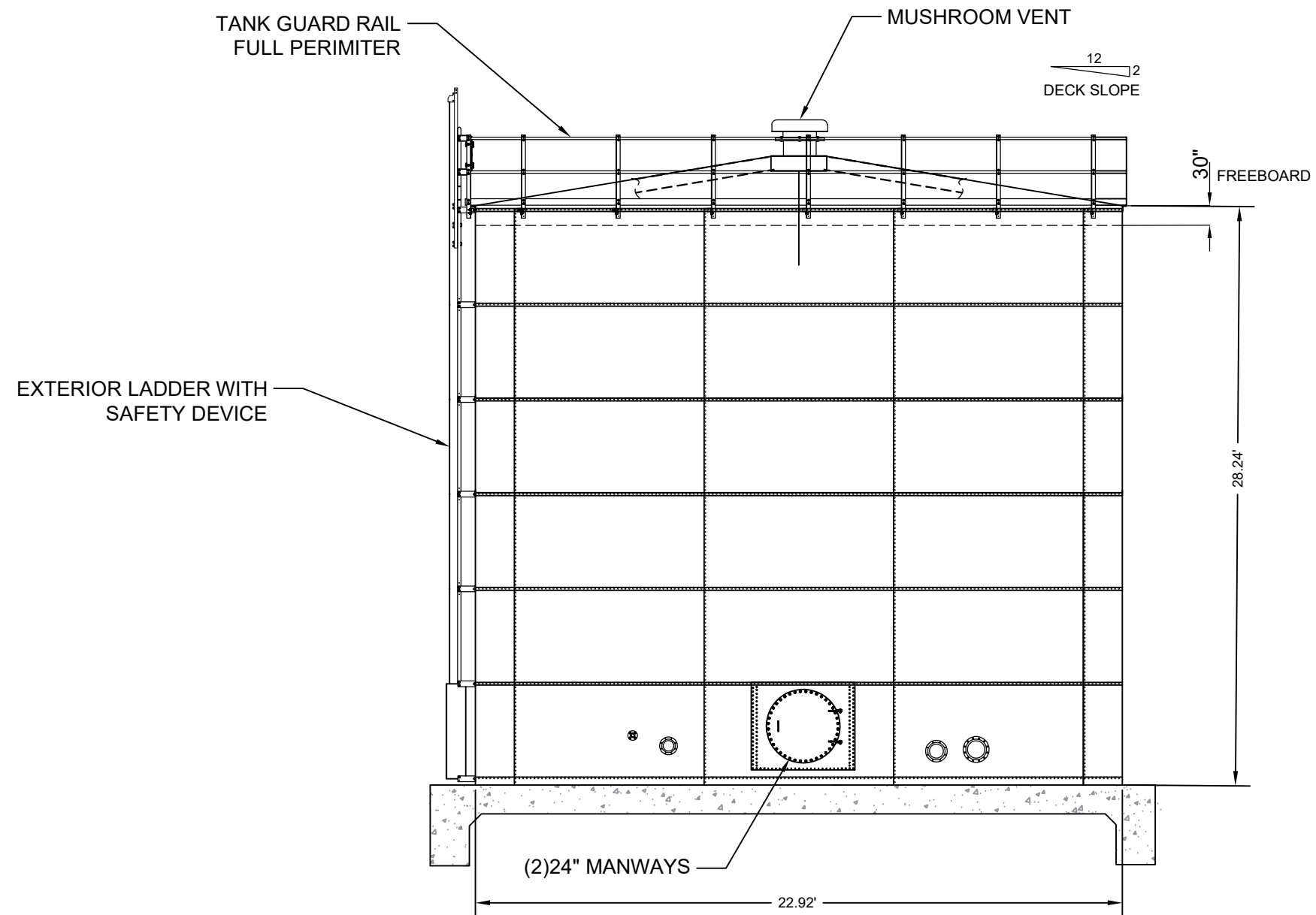


Factory Coated Bolted Steel Tank Preliminary Submittal
NOT APPROVED FOR CONSTRUCTION

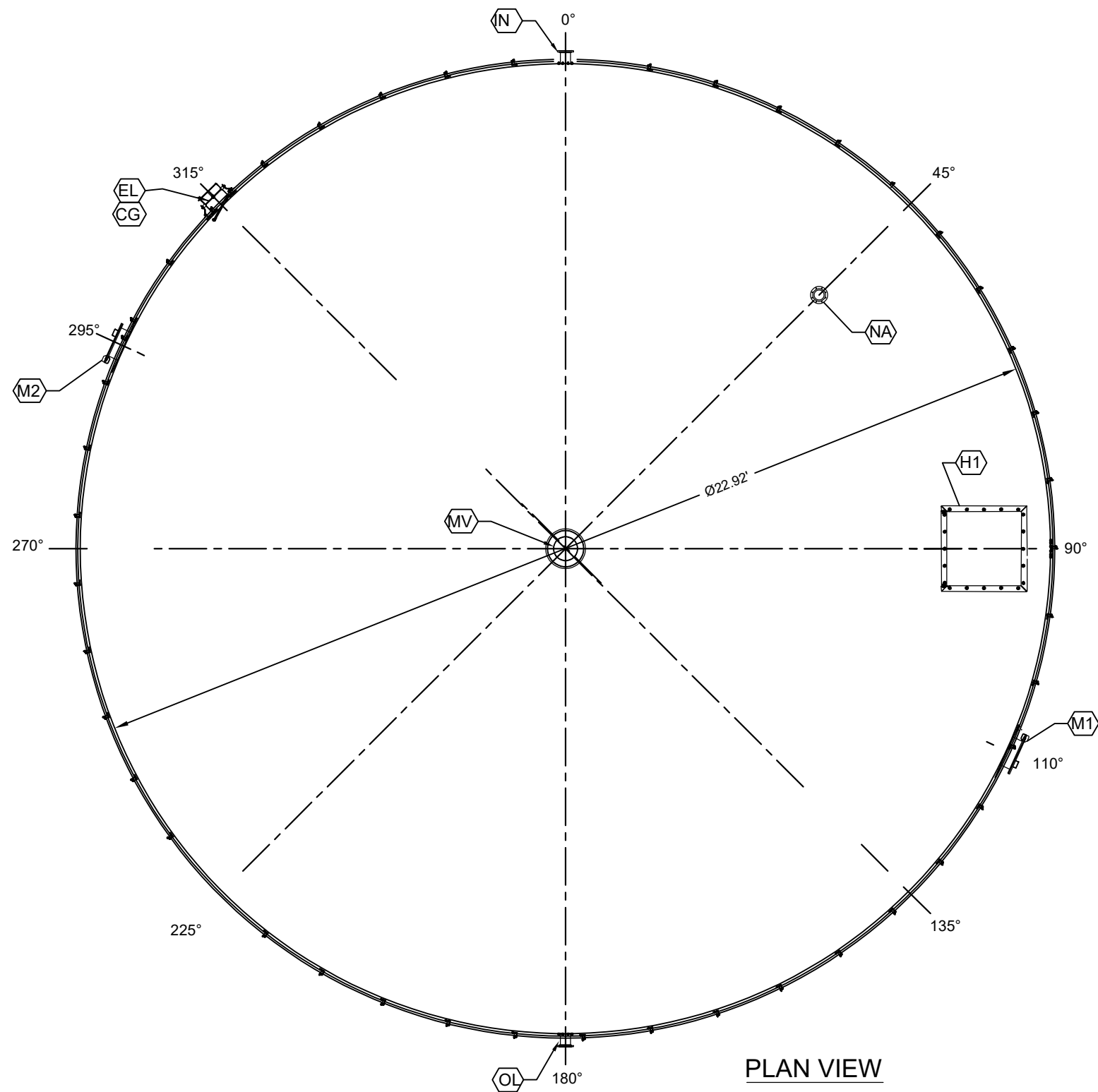


ELEVATION VIEW

<div><p>182 S. County Rd 900 E. Avon, Indiana 46234 PH-317.271.7002 FAX-317.273.1154</p></div>	JOB. No.										
	-										
	Dwg. No.										
	S-1										
					Engineer: XX	Drawn By: RS	Checked By: XX	Date: 12/3	Rev. By	Rev. Date	Revision Description
					BOLTED TANK STANDARDS						
					PRELIMINARY DRAWINGS						
					E						
					◇						
					C						
					B						
					A						

Factory Coated Bolted Steel Tank Preliminary Submittal

NOT APPROVED FOR CONSTRUCTION



APPURTENANCES			
ITEM	SIZE	DESCRIPTION	ORIENTATION
LADDERS & GUARDRAIL			
EL		STANDARD EXTERIOR LADDER W/ FALL PREVENTION	315°
CG		STANDARD COMPLETE PERIMETER GUARDRAIL	0°
DECK APPURTENANCES			
NA	6"	150# NOZZLE	45°
MV	20"	ALUMINUM HOOD MUSHROOM VENT	CENTER
H1	36"SQ.	SQUARE HATCH - TANK ACCESS	90°
SIDEWALL APPURTENANCES			
M1	24"	ROUND MANWAY - TANK ACCESS	110°
M2	24"	ROUND MANWAY - TANK ACCESS	295°
OL	6"	150# NOZZLE W/ ANTI- VORTEX - OUTLET	180°
N	6"	150# NOZZLE W/ INTERIOR PIPING - INLET	0°
GP	2" x 5" x ¼"	(2) GROUNDING LUGS	FIELD



182 S. County Rd 900 E.
Avon, Indiana 46234
PH- 317.271.7002 FAX-317.273.1154

JOB. No.
-
Dwg. No.
S-2

BOLTED TANK STANDARDS
PRELIMINARY DRAWINGS

Engineer: XX	Drawn By: RS	Checked By: XX	Date: 12/3
--------------	--------------	----------------	------------

E	⬠	Ⓢ	Ⓟ	A
---	---	---	---	---

Revision Description

Rev. By	Rev. Date
---------	-----------